

EMTools Software Solution

Features

- **Constantly monitor NOAA CAP and polygon alerts**
- **Activate sirens within defined NOAA weather alert threat areas**
- **Activate multiple sirens by plotting user defined threat alert areas**
- **Poll sirens to receive confirmation of siren activation and more**
- **View siren status on GIS map**
- **EMTools Scenario Manager to define actions taken for alerts**
- **Overlay ALOHA/MARPLOT toxic threat plume modeling**
- **Access current NOAA weather stations**
- **Listen to NOAA weather radio all-hazard streaming audio**
- **View NOAA radar images on map**
- **Import over 50 different types of GIS files**
- **View EMTools data over the internet such as previous 24-hour activation history, log received SmartMsgs and Federal Signal weather station data**

Applications

- **Emergency Management**
- **Public Safety Officials**
- **Campus Safety**

The Federal Signal EMTools software solution is a cutting-edge all-hazard alerting emergency management system. EMTools can enable emergency managers and public safety officials to monitor live weather data from NOAA and Federal Signal weather stations, listen to NOAA weather radio streaming audio, receive weather alerts from NOAA via common alerting protocol (CAP), activate outdoor warning sirens, forward NOAA alerts to various devices to warn citizens of impending dangerous conditions and simultaneously view, control and record video from multiple Axis video cameras.

Within the EMTools software, instant weather data from Federal Signal and NOAA weather stations can be viewed and monitored. In addition, EMTools interfaces to the National Weather Service's CAP server and constantly monitors weather alerts from NOAA. EMTools enables users to configure and automate pre-defined actions based on the alert events.

EMTools is fully integrated with a GIS mapping package and can display radar weather images. Users can determine which weather alerts they wish to receive. When an alert occurs, the alert message can be scrolled across the top of the screen and be configured for an audible alert.

On the map view, visual indications of the alerts are displayed in color coding. The maps are interactive so that notices, watches and warnings can be viewed in their entirety by clicking on the various color-icons shown on the map. Threat areas are quickly created in the shape of a polygon based on the latitude and longitude points issued by the National Weather Service. EMTools also enables users to manually plot a threat area on the map. Once a polygon threat area has been identified, EMTools will automatically identify the warning devices and sirens within that threat area. When EMTools is integrated with the Federal Commander Digital System, these identified warning sirens can be activated to warn people who are outdoors. The threat area can also be configured to identify and activate sirens within a specific distance from the threat area. Siren sites status on the map are shown with color coded icons.

continued on back



FEDERAL SIGNAL
Safety and Security Systems

Advancing security and well being.

EMTools Software Solution

When purchased in conjunction with Federal Signal SmartMsg users can automatically send out alerts over a variety of devices including home telephones, cell phones, pagers, PDAs, computers, e-mail, SMS devices and handheld radios based on the CAP data that they receive. This will warn people who are indoors or outdoors of dangerous conditions. They can also send out SmartMsgs when they manually plot polygon threat areas, or transmit SmartMsgs directly from EMTools.

With the video module, users can view, operate and record video on multiple IP addressable Axis video cameras. This feature enables emergency managers to view live footage of impending storms as they occur. Users can control the cameras with their computer's keyboard or mouse and also record video. The only limit to the number of cameras is based on their network bandwidth. Users can also view preset camera angles. Customers can plot a camera icon on the map using the lat/long location of the camera.

The weather station module enables users to plot the location of their weather stations on the map using the lat/long coordinates. They can also view their current weather data on a weather monitoring screen. Customers can add any IP addressable Federal Signal custom weather station to their system.

Specifications

CCU Minimum Requirements*

An IBM® compatible Pentium® system or greater running at 2.8 GHz or faster
Windows XP®, Windows 7® or 2003 server
2 GB or more of random access memory (RAM)
80 GB hard disk drive or larger
SVGA color monitor and controller
1024 X 768 resolution, 24 bit color recommended
CD RD-W drive
101-key enhanced keyboard
Mouse

* Sold separately or customer supplied

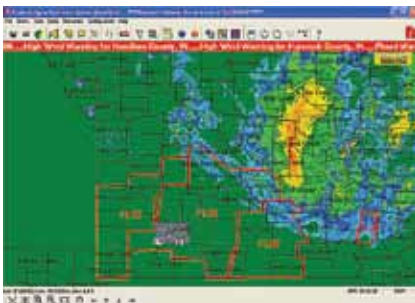
@Windows is a registered trademark of Microsoft Corporation in the United States and other countries.

@IBM is a registered trademarks of International Business Machines Corporation

@Pentium is a registered trademarks of Intel Corporation

Product Models

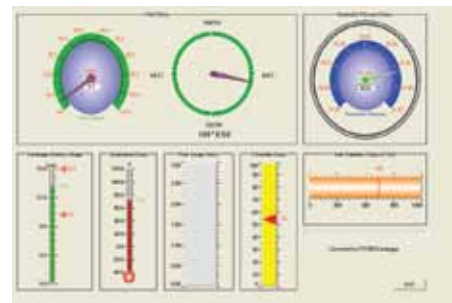
EMT	EMTools standard software package
EMT-SMSG	EMTools SmartMsg module
EMT-VID	EMTools video module
EMT-WS	EMTools weather station module
EMT-MNT	EMTools one year maintenance license
EMT-VUP	EMTools software version upgrade



Manual or NWS created threat polygons



Live video feed



Live Federal Signal weather station data

 **FEDERAL SIGNAL**
Safety and Security Systems
Advancing security and well being.